

As the Internet of Things (IoT) is essentially digitizing the physical world, CommanderOne is the latest innovation that allows you to connect with your most critical asset anytime, anyplace. The CommanderOne IoT platform enables you to monitor and control your warning sirens from any desktop or mobile device. It offers real-time data with actionable insights, enabling you to make important decisions quickly.

We understand that replacing a legacy infrastructure with new smart devices may be cost prohibitive, therefore, CommanderOne leverages your existing Federal Signal warning system and makes it smarter. With its simple dashboard and intuitive interface, CommanderOne is designed to make your mission successful in critical moments.

### Reasons You Want CommanderOne Platform



#### User Experience

The Intuitive Interface is simple to setup, always up-to-date, and connects to your on-premise Commander software.



#### Mobility

A user-friendly app for iOS and Android. It has a web-based console with a mobile responsive GUI.



#### Security

We understand that security is your top priority. CommanderOne utilizes IPSEC over SSL with a multi-layered authentication mechanism.



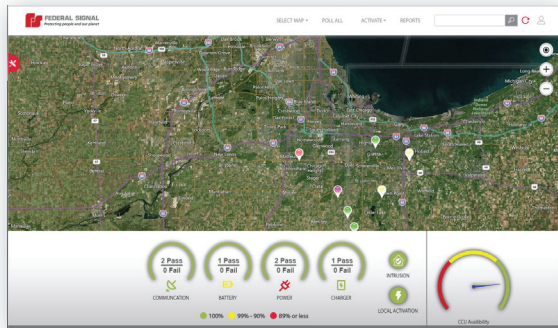
#### Scalability

CommanderOne platform is scalable from a few devices to a few million devices. It leverages a global network of data centers to maintain availability while securing your data.

### Dashboard

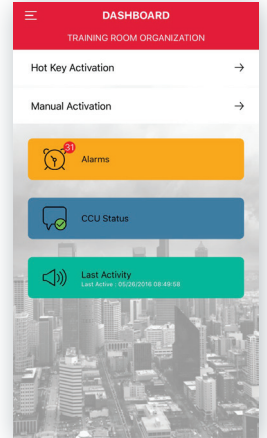
#### Dashboard Web

Dashboard is designed to give you the status of the system in seconds. It utilizes Bing maps and its responsive design enables colored icons to reflect the status of each site and control point. Each status monitor is color coded to quickly gain insight about your system. It has spatial intelligence where all siren sites are geo coded and can be searched through the search bar.



#### Dashboard App

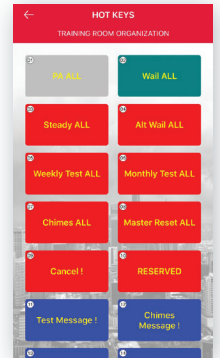
Native iOS and Android apps let you control and monitor your system from virtually anywhere. It shows all the alarms by a single click. Just like other apps, the system can be refreshed with a slide of a finger.



### Activation

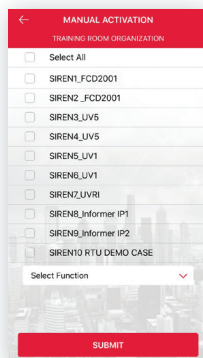
#### Hotkey

Commander hotkeys are mirrored in the web and mobile interface to give you the simple effective interface you have trusted for years.



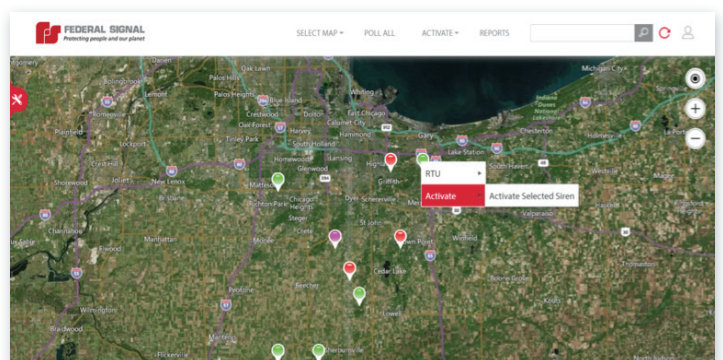
#### Manual Activation

In addition to hotkeys, sirens can be activated manually. Choose the sites and the function that you want in just a few clicks from either the web or the mobile application.

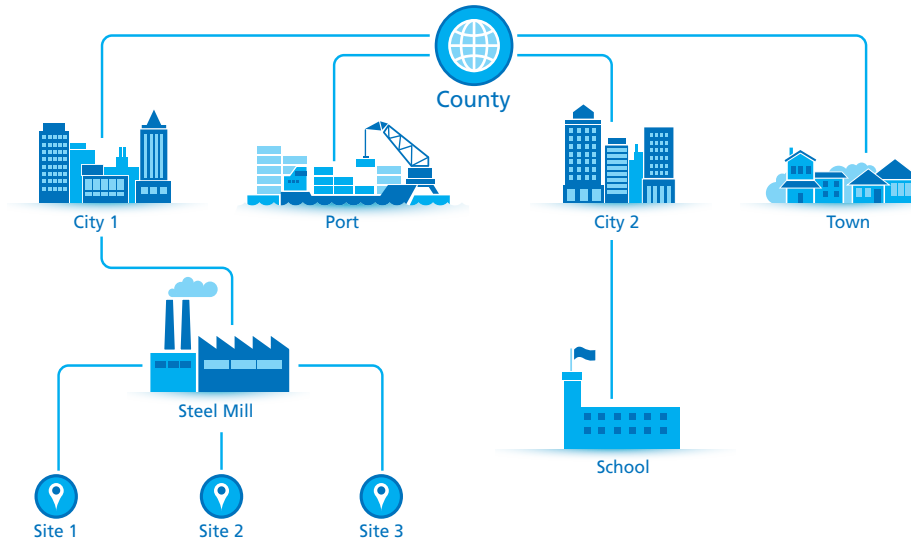


#### Map-based Activation

Sirens can be activated from the map. Its geo-intelligent interface allows you to activate or refresh status from the dashboard with just few clicks.



## Centralized Command and Control

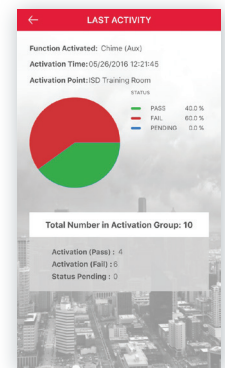


CommanderOne is designed for a centralized command and control by managing disparate systems. Whether you have one site or multiple sites, you need a single dashboard to monitor and manage your network.

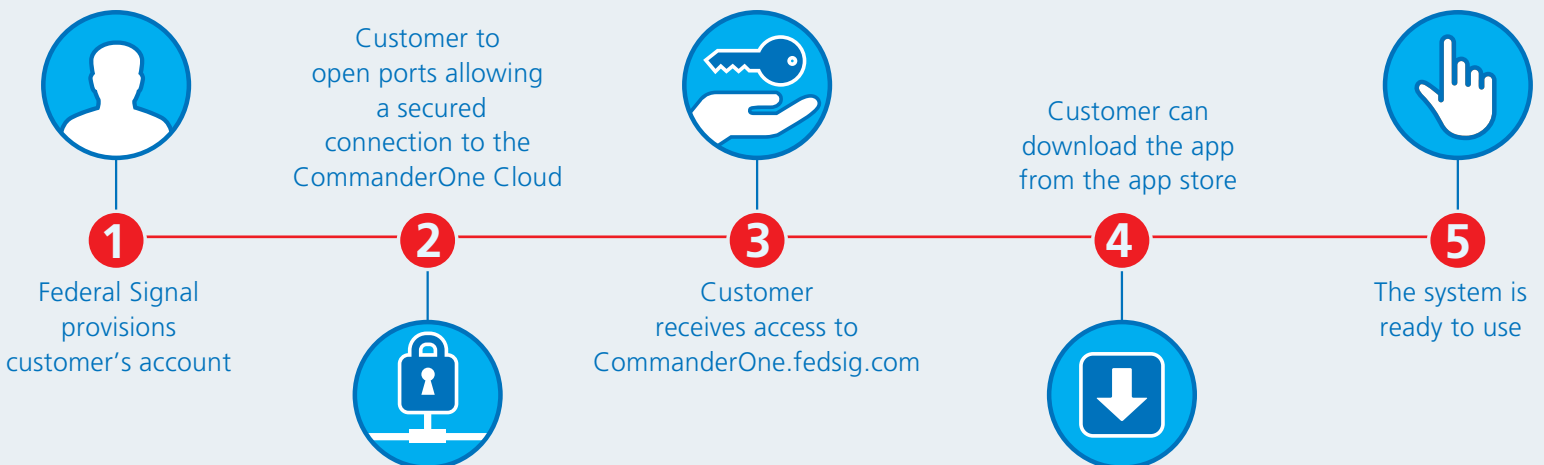
## Reporting

Built-in reporting allows you to produce quick status reports. From the web console, you can download the reports in various formats including PDF, Excel, CSV, etc.

Mobile app provides quick status of last activation and easy to use graphical display.



## Ease of Implementation



### Select CommanderOne Model for Annual Subscription

	Standard	Professional	Enterprise
Model Number*	COMMANDER1-S	COMMANDER1-P	COMMANDER1-E
Number of Seats	5	20	Per quote
Smartphone App (Android and iOS)	✓	✓	✓
Tablet App (Android and iOS)	✓	✓	✓
Desktop	✓	✓	✓
Number of Organizations	1	2–5	Over 5
Number of Devices (Sirens, Informers, etc)	up to 255	256–512	Over 512
In-release Commander Feature Upgrades and Fixes	✓	✓	✓

\*Includes remote implementation support. For on-site support and training, contact your Federal Signal representative for a quote.

### Prerequisites

- Commander Software version 14.6 or greater
- Internet access at Central Control Unit (base station computer running Commander)
- Static IP address assigned to on-premise Commander