

Speakers & Strobes Emergency Notification

Features

- **Campus, Military and Indoor Mass Notification**
- **Clear lens strobe**
- **Plain housing or with 'Alert' text for additional notification**
- **Synchronization of strobe lights**
- **UL listed; NFPA 72 and ADA Compliance**



EN-CSSPC



EN-WSTAC



EN-CWSP

Ceiling Mount Speaker – The ceiling mount speaker offers a high quality speaker for dependable communications. The speaker is listed to ANSI/UL 1480, 1971, and 2043 for use with fire protective signaling systems. This device offers a choice of field selectable power taps of 1/8, 1/4, 1/2, 1, 2, and 4 watts for use with 25 Vrms or 70.7 Vrms audio amplifiers. The frequency range of the speaker is 400-4,000Hz. This device is suitable for line supervision. This device can be mounted to either the EN-SMBS or a 4" square x 2-1/8" deep metallic back box.

Wall Mount Strobe – The wall mounted strobe with clear lens offers a dependable visual alarm for warning and emergency notification. Applications include severe weather, evacuation, emergency response, etc. This device runs on 24VDC. The candela options are 15, 30, 60, 75, and 110. These options are field selectable and tamper resistant. A die cast 4" mounting bracket is included which incorporates a feature that allows the installer to easily pre-wire the system and test for supervision. The product also features a locking mechanism that secures the product to the bracket without showing any screws. Installers can check the voltage drop, current draw and match it against the blue print with a unique verification feature. This wall strobe is UL464 and UL1971 listed, NFPA 72 and ADA Compliant and includes both plain (no lettering) and alert lettered housings.

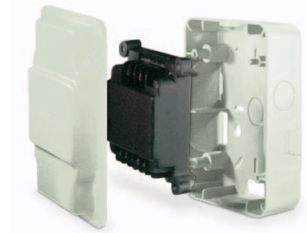
Indoor Mount Speaker Strobe – The indoor speaker strobe combination is ANSI/UL 1480, 1971 and 2043 listed for the purpose of fire protective signaling systems and compliant with NFPA 72 and ADA. The speaker strobe combination is available in either wall or ceiling mount. The strobe utilizes a clear Xenon flash tube which generates a high-intensity light visible from all sides with variable candela selection. This device offers a choice of field selectable power taps of 1/8, 1/4, 1/2, 1, 2, and 4 watts for use with either 25 Vrms or 70.7 Vrms audio amplifiers. The frequency range of the speaker is 400-4000Hz. This device is suitable for line supervision and can be synchronized using the optional EN-SM. This device can be mounted to either the EN-SMBS or a 4" square x 2-1/8" deep back box.

Speakers & Strobes Emergency Notification

Synchronization Module

The synchronization module is designed to provide an easy way to synchronize multiple strobe light flashes using only two wires in instances where a synchronized flash is required.

- Easy to Install
- Rated for 3 Amps continuous current and 5 Amps surge or inrush current
- Synchronizes to 1Hz Flash Rate
- Operates 1 Class 'A' circuit or 2 Class 'B' circuits at 3 Amps per circuit.
- UL 464 and UL 1971 Listed
- CAN/ULC S526-M87/S524-01 Compliant
- This module comes with its own back box and cover



EN-SM

Specifications

Power	All units powered via 24VDC
Color	All units off-white
Screw Terminals	12-18 gauge
Wall Strobe Candela	15, 30, 60, 75 and 110
Ceiling Strobe Candela	15, 30, 75, 95 and 115

Dimensions

EN-WSTAC	5" high x 4.5" wide x 2.5" deep (12.7 cm high x 11.43 cm wide x 6.35 cm deep)
EN-CSSPC/AC, EN-WSSPC/AC and EN-CWSP	6.1" square x 1.88" deep (15.49 cm square x 4.78 cm deep)
EN-SM	Box / enclosure 5.57" high x 4.55" wide x 2.39" deep (14.15 cm high x 11.56 cm wide x 6.07 cm deep)

Order Information

Ceiling or Wall Mount Speaker

EN-CWSP Ceiling/Wall Speaker, 25 Vrms or 75 Vrms

Wall Mount Strobe

EN-WSTAC Wall Strobe, Alert / Plain, Clear lens

Wall Mount Speaker Strobe

EN-WSSAC Wall Speaker/Strobe, Alert, Clear lens

EN-WSSPC Wall Speaker/Strobe, Plain, Clear lens

Ceiling Mount Speaker Strobe

EN-CSSPC Ceiling Speaker/Strobe, Plain, Clear

EN-CSSAC Ceiling Speaker/Strobe, Alert, Clear

Options

EN-SMBR	Surface Mounting Box, Round
EN-SMBS	Surface Mounting Box, Square, Indoor/Outdoor
EN-SM	Synchronization Module, 3 Amps



EN-SMBR



EN-SMBS